

# Hole Sealer Plug™ - Product Information

**Hole Sealer Plug™** is an expanding structural putty containing Nano X5 reinforcement manufactured to seal holes in boat hulls and in other types of through hole ruptures. Once **Hole Sealer Plug™** is massaged thoroughly in water, the putty should be compressed continuously against the hole. When compressed to the leak the putty will expand through the hole and harden very quickly to form a plug. No mixing of chemicals or additives is required.

After massaging in water **Hole Sealer Putty** will expand and harden to form a **Plug**

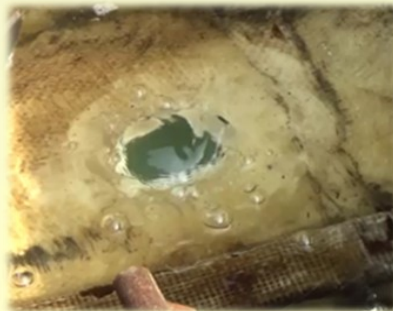
**Hole Sealer Plug™** will seal or reduce leakage in boat hull and boat deck ruptures manufactured from common materials; GRP, CRP, Wood, Steel including several plastics. Use **Hole Sealer Plug™** above or below the waterline

A Boat Hull Rupture  
**Hole Sealer Plug™** is designed for these types of situations

A Boat hull rupture sealed with a **Hole Sealer Plug™** each pouch will spread to 100mm diameter by following the instructions provided



**Hole Sealer Plug™** is provided in 100gm pouches



**Hole Sealer Plug™** requires constant compression over the leak until hard

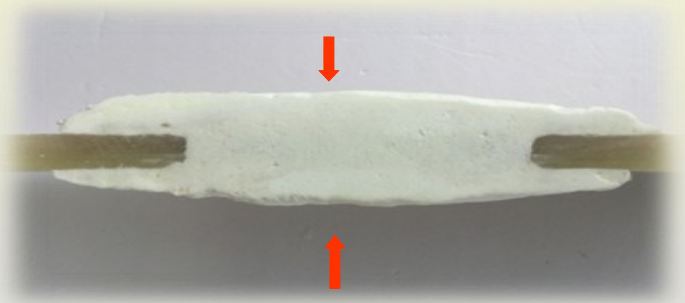
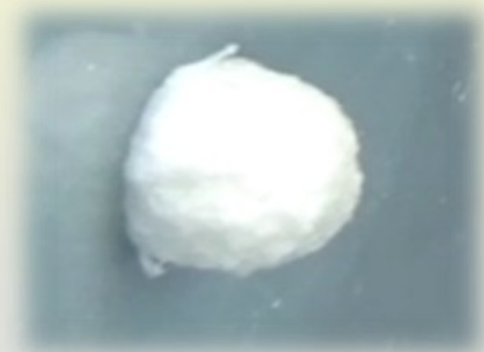


**Hole Sealer Plug™** fully cured. The putty contains Nano X5 which provides structural integrity



**Hole Sealer Plug™** the putty has migrated through the hole to naturally form a **Plug**. Even better results can be achieved if access is possible both sides of a through hole rupture.

A cut out view using two pouches of **Hole Sealer Plug™** this application used one pouch each side of the through hole rupture. The versatility of **Hole Sealer Plug™** provides the user the opportunity to save the boat in a serious situation.



# Hole Sealer Plug™ - Product Information

## Sealing a large hole rupture using Hole Sealer Plug™ 100gm pouches

**Hole Sealer Plug™** Putty can be used above and below the Waterline  
(Photos below are recorded dry to improve visual presentation)

Boat Hull Ruptures are rarely symmetrical



**Hole Sealer Plug™** is versatile  
Kneading the putty to the rupture



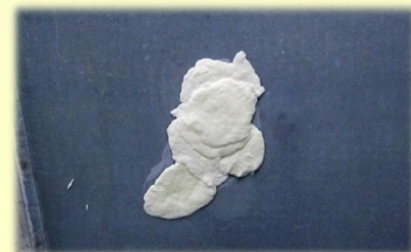
Reducing the hole by using pouches in 30 second intervals



Compressing the putty over the leak is important until hardened



The final putty pouch is applied and compressed to close the hole



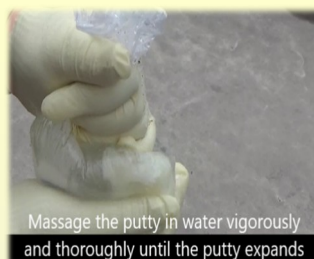
The putty is compressed both sides of the boat hull



Massage the Putty in Water In the Bags provided



Massaging the Putty in Water starts rapid hardening



Use the same bag to compress the putty over a high pressure leak to avoid washout during the flood



Or use gloved hands for delicate kneading



## Chemical Containment

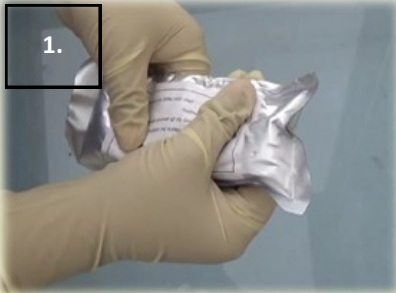
**Hole Sealer Plug™** hardens quickly once massaged in water. The Putty is resistant to most aggressive chemicals and helpful in chemical spillage containment.

**Hole Sealer Plug™** Putty is best used in through hole ruptures and will expand rapidly to form a Plug



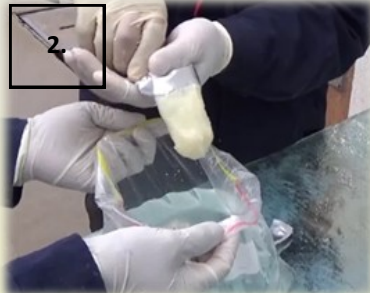
# Hole Sealer Plug™ - Product Information

Hole Sealer Plug™ is packaged in 100gm pouches for easy handling



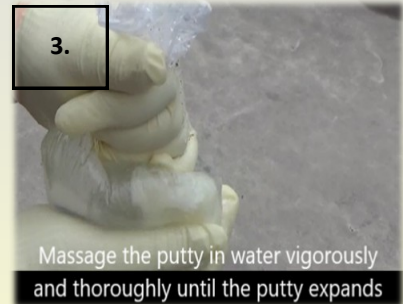
1.

Twist the back of the pouch to remove the Putty into the plastic bag provided in the Hole Sealer Kit



2.

Massaging the putty in the plastic bag partly filled with water causes the putty to rapidly expand and harden.



3.

Massage the putty in water vigorously and thoroughly until the putty expands

If a high pressure leak is flooding the boat use the plastic bag provided for compressing the putty to the leak. The bag helps to reduce putty washout from the flood water passing through the hole rupture.



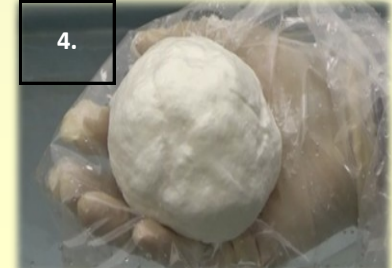
4.

Remove any loose coating or damage and abrade the area around the leak with the abrasive pad provided. For low pressure leaks gloved hands will enable kneading of the putty into the desired position.



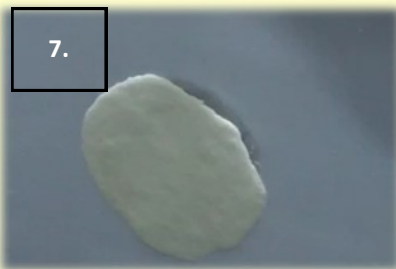
5.

As the Putty expands form a putty ball shape. Then apply constant compression on the putty and the leak until the putty hardens.



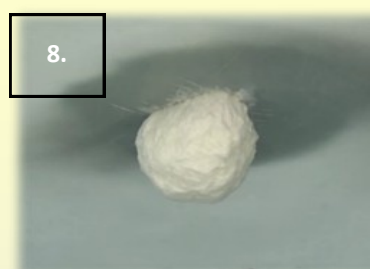
6.

A typical Hole Sealer Plug application after the compression and hardening of the putty over the hull rupture and leak



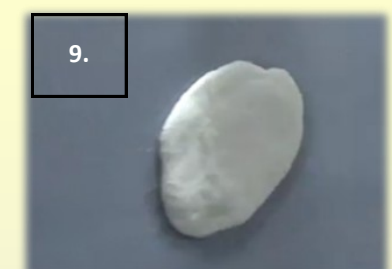
7.

A Hole Sealer Plug expanding through the hull rupture. Note the hand of the applicator compressing the putty on the other side of the semi transparent boat hull structure



8.

Creating a Hole Sealer Plug both sides of a Hull rupture is the best repair method (Illustration No 7 and 9)



9.

## Typical hardening times of water activated Hole Sealer Plug™ & Water Activated Tapes

Water Temperature	Gelling Time (Minutes)	Hardening (Minutes)
-1° C	4.5	10
18° C	2.0	4.20
30° C	1.0	2.33

Black Tape (provided in your hole sealer package) can be used to reinforced Hole Sealer Putty for 'Wrap Around' applications.



Before using Hole Sealer Plug consider PEM sticky Patch as an instant leak sealing solution

