

# Black Tape

Part of the Hole Sealer range of Products

Black Tape is a water activated - Structural Wrapping Tape

## Black Tape

Black Tape™ is a fibreglass reinforced polyurethane resin enriched tape for wrap around applications to strengthen damaged or weakened structures.

Black Tape™ is water reactive and will harden quickly once subjected to water and/or removed from the vacuum sealed foil packaging.

Black Tape™ can be applied above and below the waterline.

Black Tape™ is compatible with the Hole-Sealer Plug Putty and can be applied together to form a plug sealing structural wrap around application in wetted or submerged repair situations (above or below the waterline).

Open the Pouch and remove the roll of Black Tape



Submerge and massage the roll in water or continuously apply water during the wrapping process



Ensure water is applied to all the Black Tape during the application



Wrap the Black Tape around the repair (at least 3 wraps) keeping the tape tight



Cut off the Black Tape with scissors when the wrap is complete



A completed Black Tape Wrap application



Black Tape as a wrapping reinforcing material is very useful in wetted or saturated repair applications and for general reinforcement to other types of concrete structures.

# Black Tape

Part of the Hole Sealer range of Products

Black Tape is a water activated - Structural Wrapping Tape

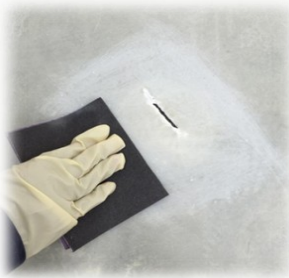
**Black Tape and Hole Sealer Plug Putty are water reactive and hardens very quickly once exposed to water**

Emergency repairs using Black Tape can be very successful especially if used in a combination wrap system. Black Tape is compatible with Hole Sealer Plug Putty as both are water reactive systems. The illustrations below demonstrate a Hole Sealer Plug Putty application with Black Tape circumferential wrap which is applied together (Applied before the Hole-Sealer Plug Putty cures).

Surfaces should be **clean and free from grease, loose coatings and rust**. Use a coarse abrasive paper as required to prepare the surface. If the surface is greasy or oily clean with soapy water or acetone, or abrade the damaged site vigorously to remove as much contamination as possible.

Abrading the surface around the damage area with coarse abrasive paper will significantly improve the bonding strength to the surface

Read and follow the instruction for the Hole-Sealer Plug Putty and the Black Tape before proceeding. Massage the Plug Putty and the Black Tape in **separate** bags of water at the same time. Both materials must be applied to each other on the damage repair site when still in a soft condition (not cured hard).



Massaging the Hole Sealer Plug Putty in water will commence a reaction, keep kneading the putty



The putty will expand, work quickly to apply the putty to the damage area. Keep kneading the putty to control the expansion



Work Quickly ...Knead the Putty to the damaged area and apply the Black Tape without delay.



Quickly remove the Black Tape from the water and commence wrapping the Tape over the Putty



Wrap the Black Tape over the Putty starting from one end of the damage area



Wrap the Black Tape in a Spiral wrap direction working to the other end of the damaged area



Repeat the spiral wrapping until a structural wrap is achieved. The putty should remain soft during the wrapping process



The Putty will migrate into and through the Black Tape providing an effective and strong repair after full curing and hardening

